

# THAILAND ANNUAL REPORT 2008

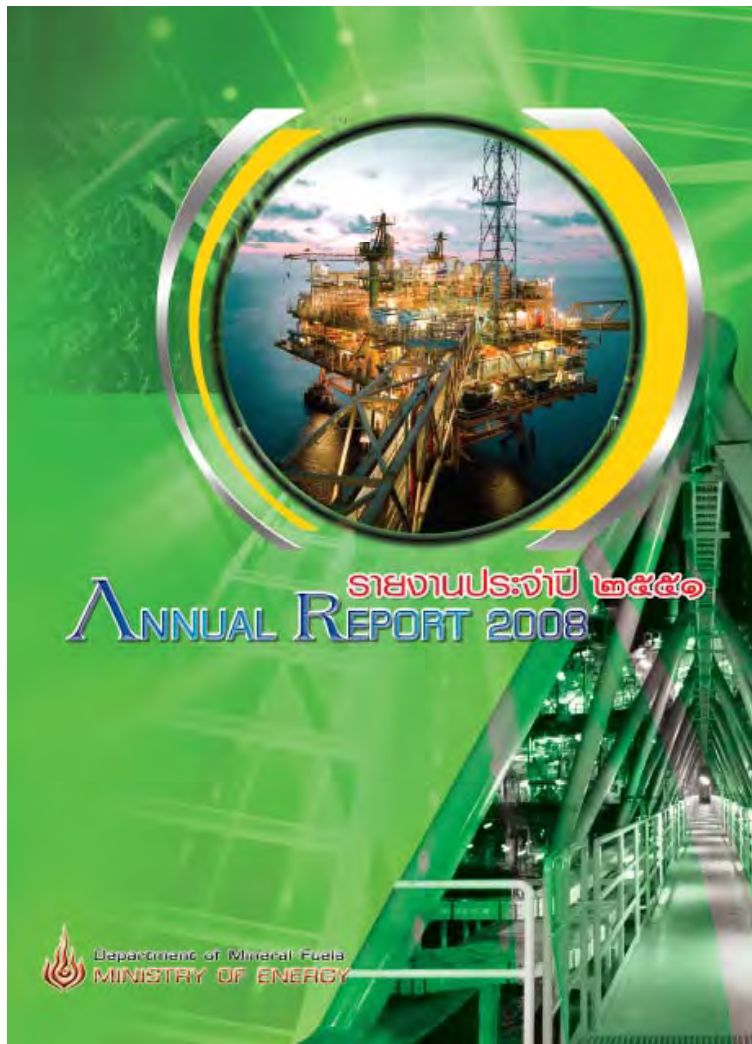
*Orn-anutt Suthsa-ngiam*

Department of Mineral Fuels

7 October 2009



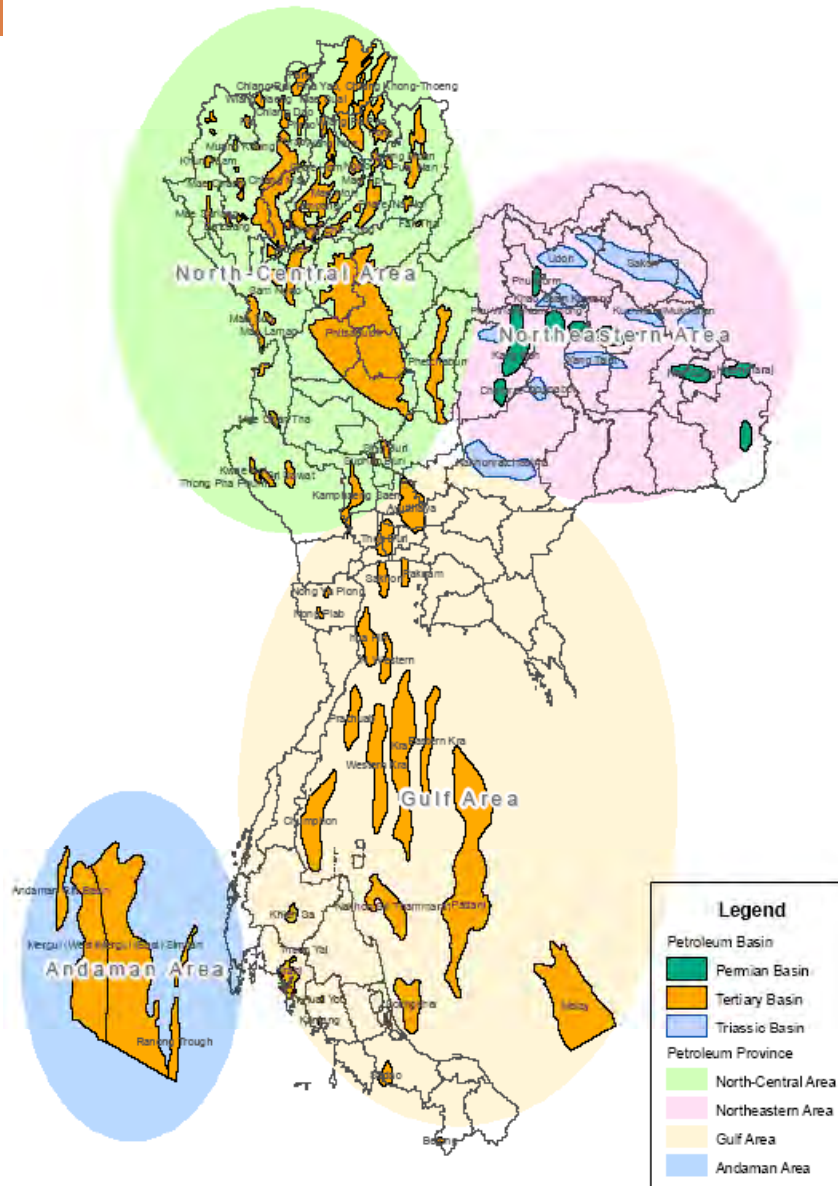
# DMF Annual Report 2008



# Outline

- Location of oil & gas activities
  - Petroleum Provinces
  - 20<sup>th</sup> Petroleum Concession Bidding Round
  - Petroleum Concessions
  - Petroleum Fields
  - Production Areas
- Exploration data
- Production data
- Fiscal regimes
- Investment Campaign

# Thailand Petroleum Provinces



## Petroleum Geological Provinces

### □ Tertiary

- North-Central Area (Crude Oil)
- Gulf of Thailand (Natural Gas & Crude Oil)
- Andaman Sea (Natural Gas)

### □ Pre-Tertiary

- Northeastern Area (Natural Gas)

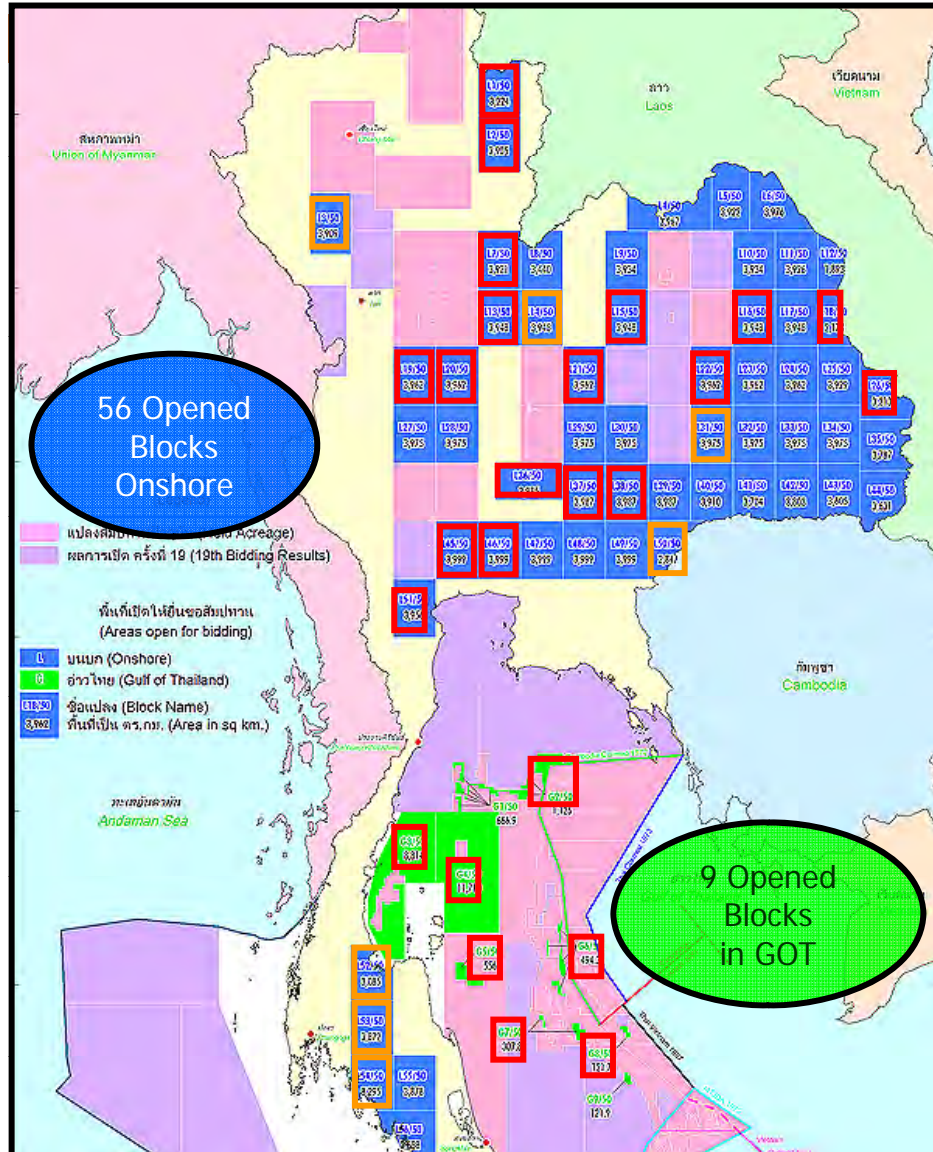
# Proved Petroleum Reserves

(Data as of 31 December 2008)

<b>TYPES</b>	<b>2004</b>	<b>2005</b>	<b>2006</b>	<b>2007</b>	<b>2008</b>
<b>Natural Gas</b> (Tcf)	<b>12.5</b>	<b>10.7</b>	<b>11.7</b>	<b>11.2</b>	<b>12.00</b>
<b>Condensate</b> (MMbbl)	<b>289.1</b>	<b>260.5</b>	<b>266.1</b>	<b>264.8</b>	<b>270.8</b>
<b>Crude Oil</b> (MMbbl)	<b>238.2</b>	<b>192.2</b>	<b>194.5</b>	<b>176.0</b>	<b>182.9</b>

Source: Department of Mineral Fuels

# The 20th Bidding Round (23 May 2007 – 22 May 2008)



✓ 65 blocks opened for bidding

✓ Total area of 235,606 km<sup>2</sup>

□ Awarded concessions

□ Being considered

The applications for **52 Blocks** have been submitted and considered

(44 Blocks Onshore / 8 Blocks GOT)

The 19<sup>th</sup> Bidding round

(July 1, 2005 – June 30, 2006)

Opened blocks: 82 Blocks

Awarded Concession : 16 Concessions

# Petroleum Concession

Activities	2004	2005	2006	2007	2008
Concessions					
Number of concessions	32	32	38	52	62
Number of blocks	42	42	50	68	80

## □ Petroleum Concessions

- Issuance of 11 concessions for 13 blocks, that is, 11 onshore and 2 offshore blocks in the Gulf of Thailand, on January 21
- Issuance of two supplementary petroleum concessions on January 24

# Petroleum Concession



Since 1971  
 20 Petroleum Bidding Rounds

62 Concessions 80 Blocks  
 (As of 31 December 2008)

	Produced	Exploration
Onshore	8	31
GOT	22	16
Andaman	-	3
<b>Total</b>	<b>30</b>	<b>50</b>

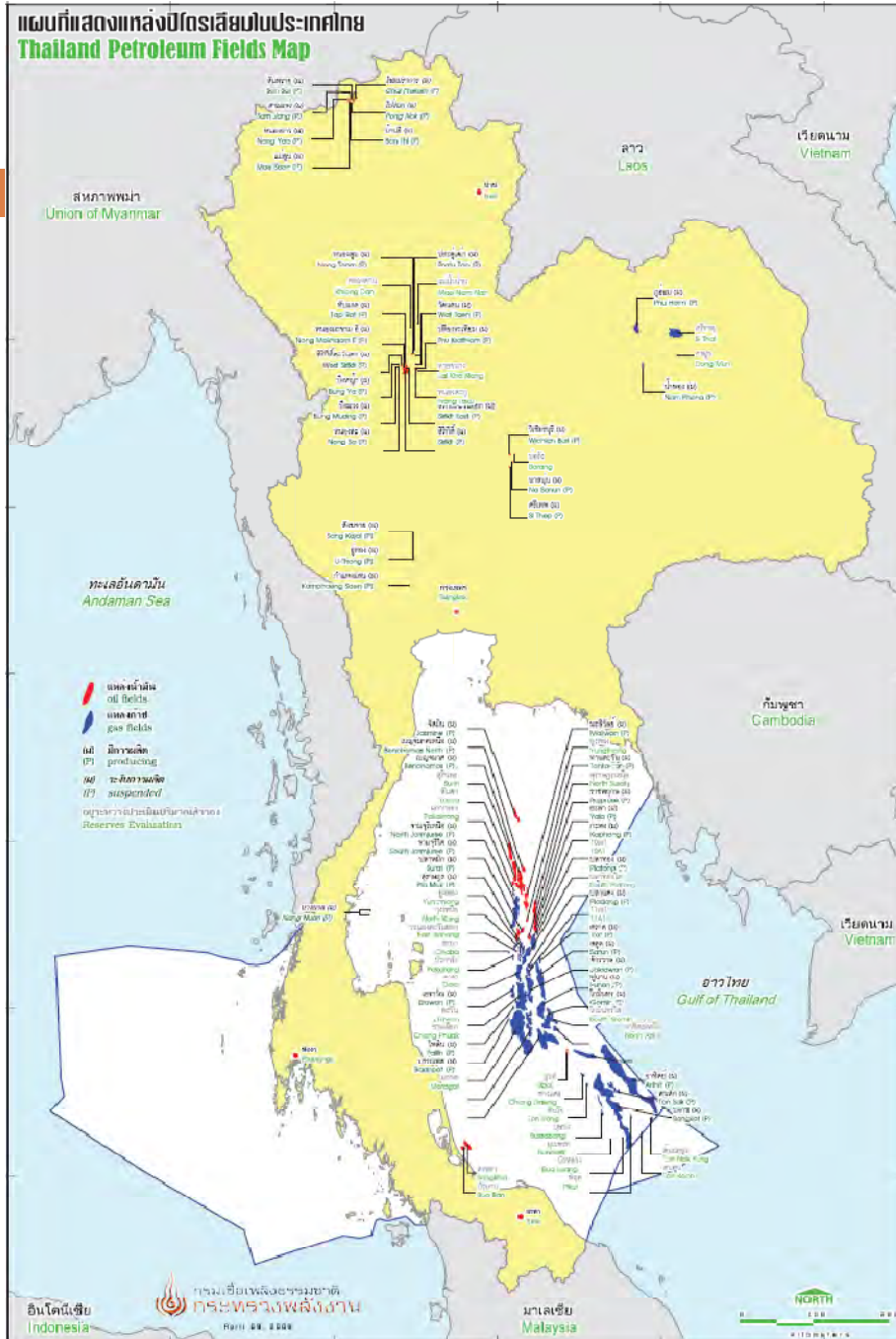


# Exploration data

Activities	2004	2005	2006	2007	2008
<b>Geophysical Surveys</b>					
Gravity survey (km)	-	-	-	-	-
2D Seismic survey (km)	57	240	1,445	8,042	15,168.2
3D Seismic survey (sq.km.)	2,294	4,053	3,934	790	254.3
<b>Drilling</b>					
Exploration well * (wells)	26	33	42	53	47
Development well (wells)	258	359	502	463	412

\* *included appraisal wells*

แผนที่แสดงแหล่งปิโตรเลียมในประเทศไทย  
**Thailand Petroleum Fields Map**

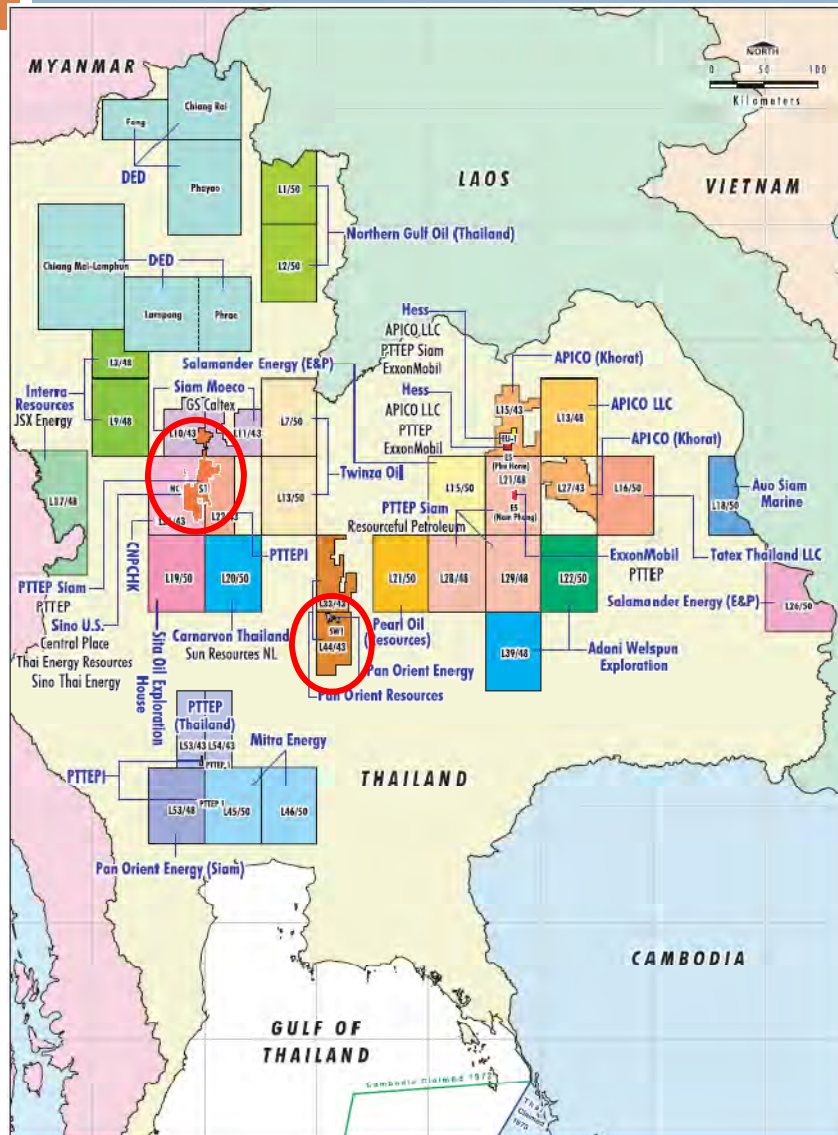


# Petroleum Fields

## Discovered Producing

<i>Total</i>	<b>78</b>	<b>49</b>
<b>Natural Gas</b>	<b>50</b>	<b>21</b>
Onshore	2	2
Offshore	48	19
<b>Crude Oil</b>	<b>28</b>	<b>28</b>
Onshore	19	19
Offshore	9	9

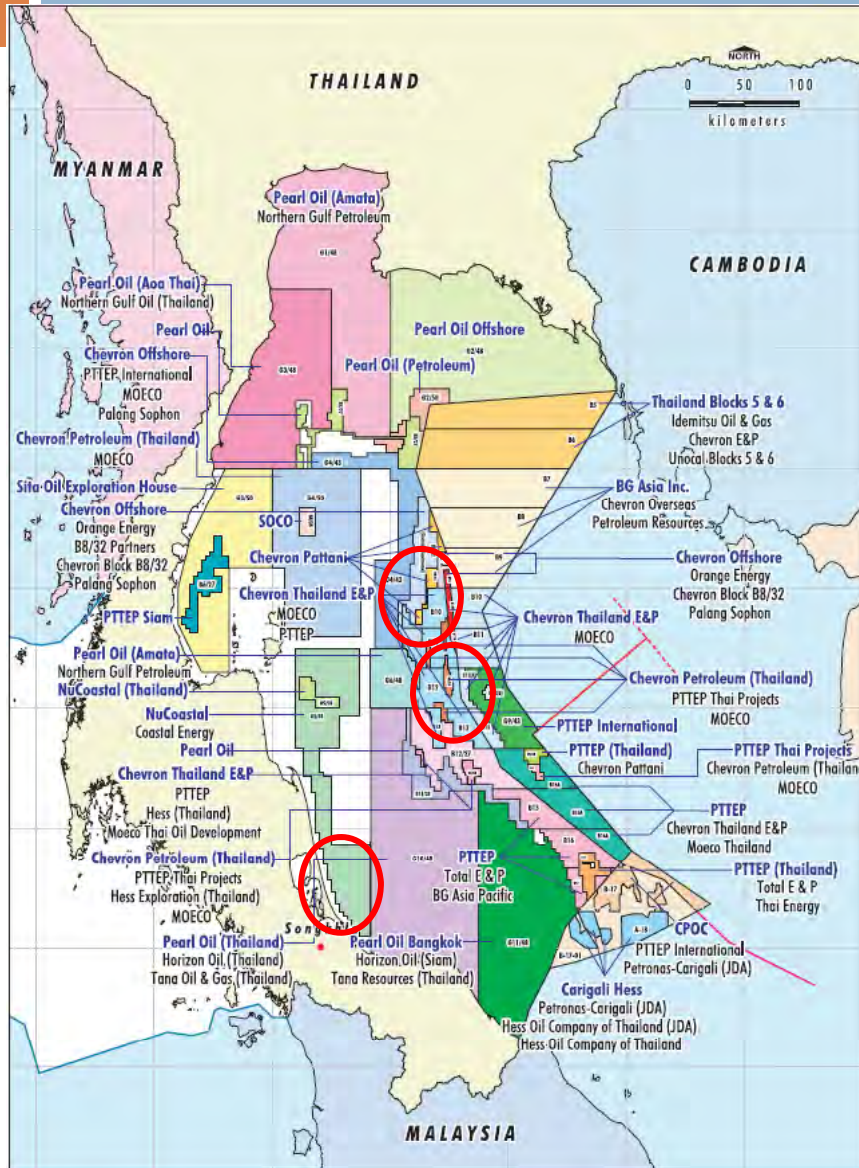
# Onshore Petroleum Production Areas



## 2 Onshore Granted Production Areas

- East Na Sanun crude production area in onshore exploration block No.L44/43, covering 27.7535 sq.km., to Pan Orient Resources (Thailand), Ltd.
- Greater Sirikit East production area in onshore block No.S1, to cover 66.234 sq.km.

# Offshore Petroleum Production Areas



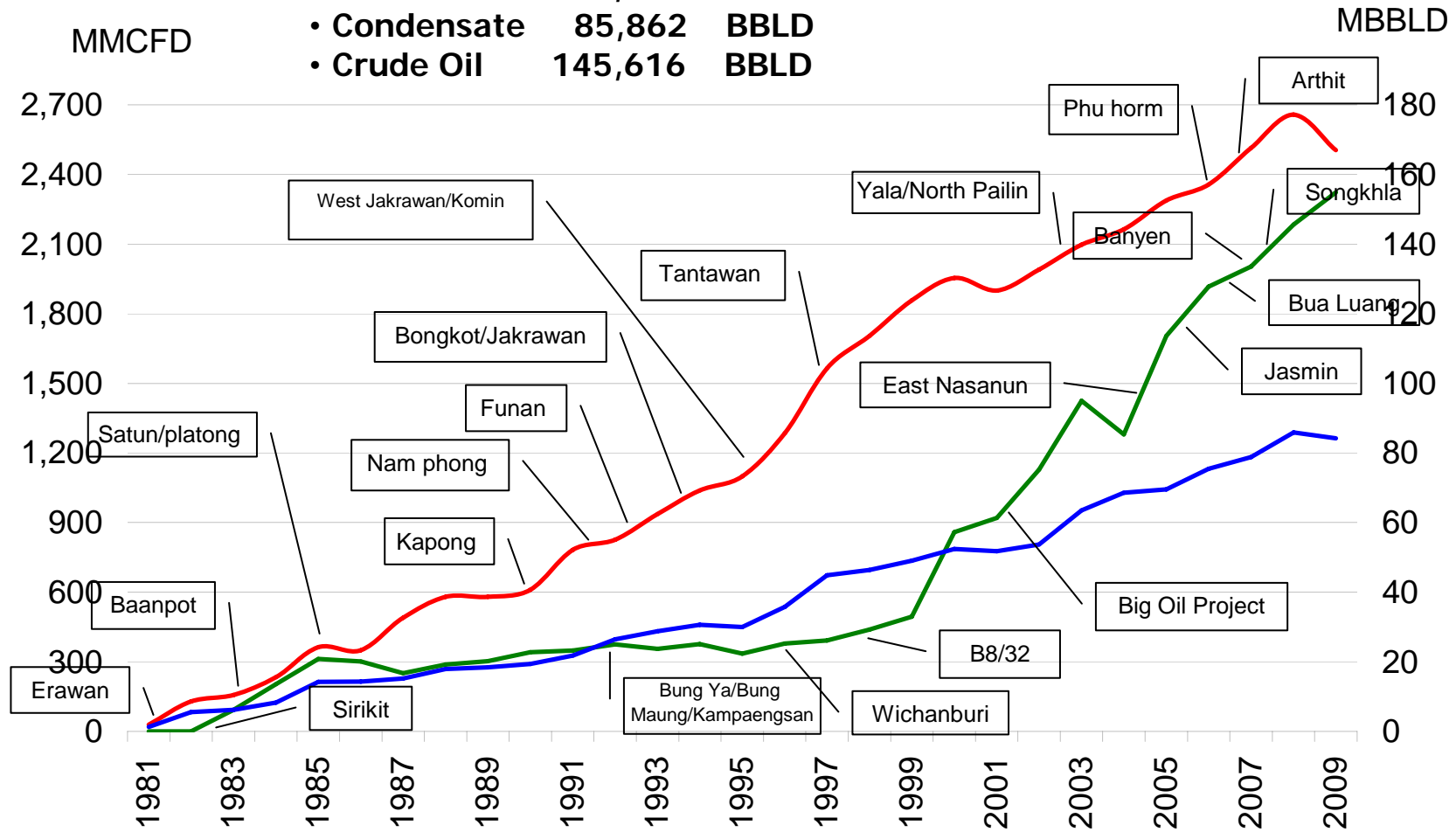
## 3 Offshore Granted Production Areas

- Yungthong crude production area in offshore exploration block No.G4/48 in the Gulf of Thailand, covering 70.7938 sq.km., to Chevron Pattani, Ltd.
- Songkhla crude production area in offshore exploration block No.G5/43 in the Gulf of Thailand, covering 75.3241 sq.km., to NuCoastal (Thailand), Ltd.
- Greater Trat production area in offshore exploration blocks No.11 and 12, awarded to cover 203.29 sq.km.

# Thailand's Petroleum Production

Production Rate @ 2008 = **687,271 BOED**, increasing **8%** from year 2007:

- Natural Gas 2,658 MMCFD
- Condensate 85,862 BBLD
- Crude Oil 145,616 BBLD



— Natural Gas — Crude Oil — Condensate

# Thailand Petroleum Regimes

## □ Concession System

### □ Royalty & Tax Regimes

### □ 2 Groups

■ Thailand I Regime: 1971-1981 (Petroleum Act. & PITA No. 1)

~~■ Thailand II Regime: 1981-1989~~

**(outdated)**

■ Thailand III Regime: Post-1989 (Petroleum Act. & PITA No. 4)

# Fiscal Regime

	<b>Thailand I, 1917</b>	<b>Thailand III, 1989</b>	<b>Government Take</b>
Royalty	12.5%	5 - 15%	DMF
SRB	-	0 - 75%	DMF
Petroleum Income Tax	50%	50%	Revenue Department

## Data Services for Concessionaires and Investors

### Exploration and Production

- Geophysical Surveys
- Data Package
- Concession Bidding Rounds

*The concessionaires shall submit other details as may be specified by the Director-General of the Department of Mineral Fuels*

### General Information

- Monthly/Annual Report
- Investment Info.
- Announcement of the DMF in Rules for the Submission of Reports on Petroleum Operations and Regulations of Data Services

## General Publications

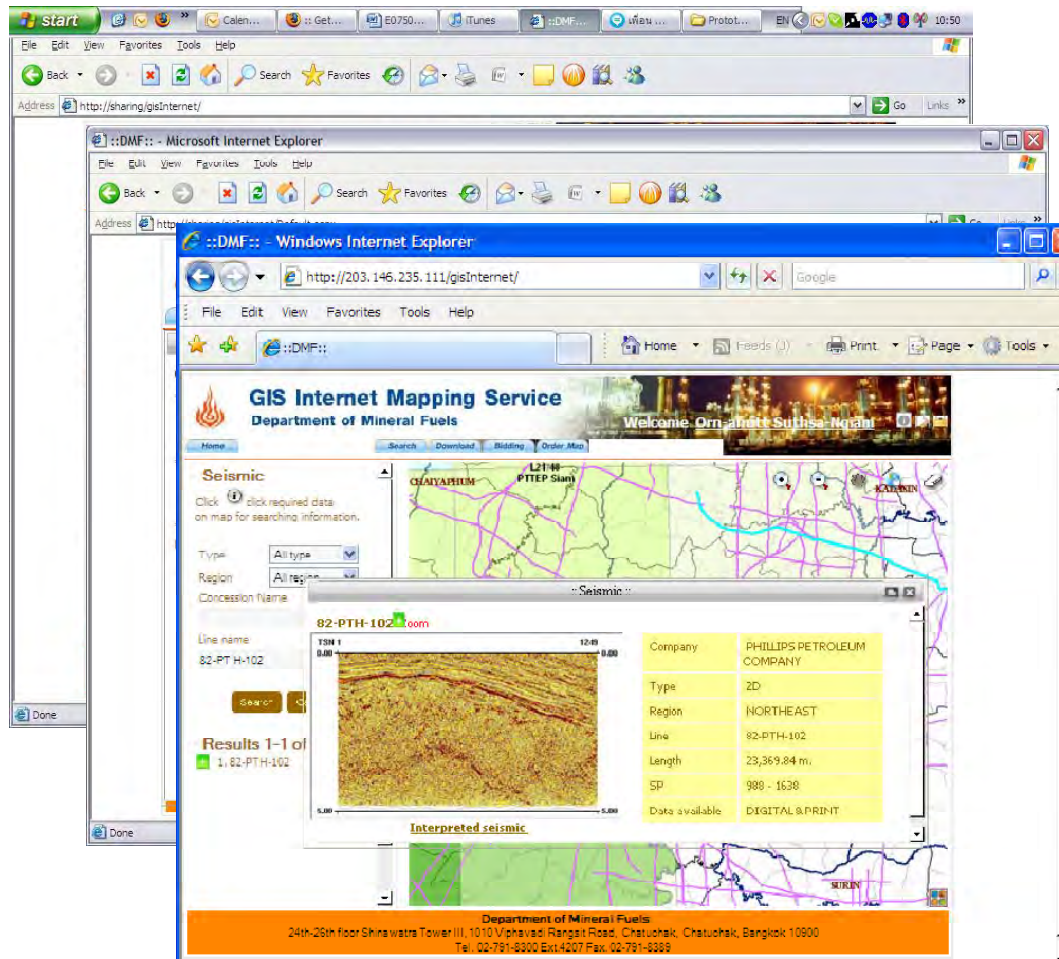
### Mineral Fuels Information

- E&P Facts & Figures
- Dissemination & Public Relations Information



# Application in Internet

□ <http://gis.dmf.go.th/gisInternet>



- Register
  - Authorizing
- Login
- Search & Query
  - Concession
  - Seismic (NE)
  - Well (NE)
  - Base Maps
- Download Map
- Order Map

THANK YOU

